

SCHALTGERÄTE

Komplett-Typen Baureihe ML

Complete types Series ML

Hauptschalter/ Not-Aus-Schalter

Bodeneinbau V
Mit Schraub- und Schnappbefestigung*
auf Normschiene 35 mm (DIN EN 50022)

Main switches Emergency-off switches

Base mounting V
Screw and snap-on mounting* on DIN rail
EN 50022 standard 35 mm

Deckelkupplung mit Vorhängeschlossperre für 3 Vorhängeschlosser

mit Bügeldurchmesser bis 9 mm,
ML-Schalter mit Klemmenabdeckung

Griff/Frontschild
rot/gelb rt/ge (mit Not-Aus Funktion)
oder schwarz/grau sw/gr

Cover coupling with lockout handle for 3 padlocks

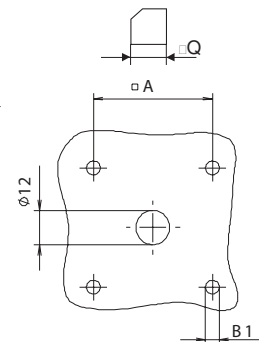
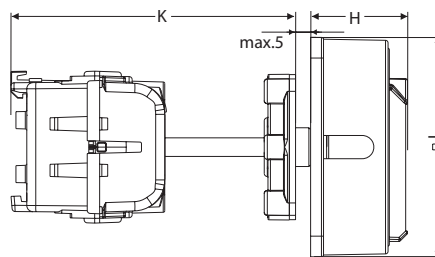
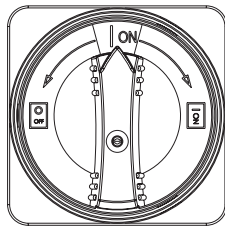
with shackle diameter up to 9 mm.
ML-switches with terminal cover

handle/front plate
red/yellow rd/ye (with Emergency-off function)
or black/grey bk/gr

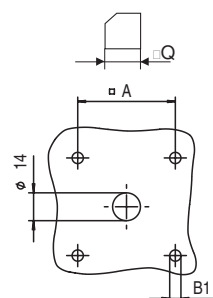
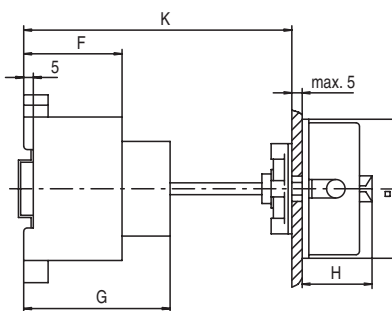
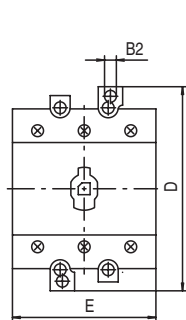


IP 65

Abmessungen / Dimensions
Bauform / Design: 1520 / 1521
Baureihe / Series: ML0

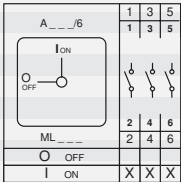
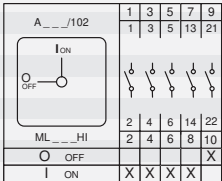
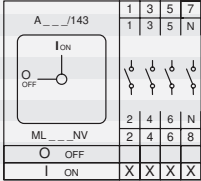
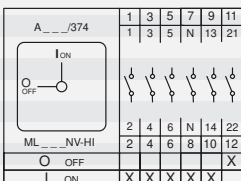


Abmessungen / Dimensions
Bauform / Design: 1520 / 1521 / 1820 / 1821
Baureihe / Series: ML1-ML3



Baureihe Series	Abmessungen (mm) Dimensions (mm)										
	A	B1	B2	D	E	F	G	H	I	K	Q
ML0	36							32	66	88-98	6
ML1	36	4,5	4,2	78	45	42	55	32	66	88-98	6
ML2	36	5,5	5,5	100	53,5	49	72	37	86	103-113	6
ML3	36	5,5	5,5	100	70	49	72	37	86	103-113	6

* ML0 mit Schnappbefestigung
* ML0 with snap-on mounting

Schaltprogramm Contact arrangement	Dauerstrom I _{th} Rated Uninterrupted current I _{th} A	Leistung Rating AC 3 kW	Leistung Rating AC 23A kW	Baureihe Series	Griff-/ Frontschild handle/ front plate	Typ Type	Best.Nr. Part #
3-polig 3-pole 	25	7,5	7,5	ML0	rt/ge rd/ye	ML0-016-3V-1520-HS	MZ 57 366
	25	7,5	7,5	ML0	sw/gr bk/gr	ML0-016-3V-1521-HS	MZ 57 367
	32	9	9	ML0	rt/ge rd/ye	ML0-032-3V-1520-HS	MZ 59 366
	32	9	9	ML0	sw/gr bk/gr	ML0-032-3V-1521-HS	MZ 59 367
	25	7,5	11	ML1	rt/ge rd/ye	ML1-025-V-1520-HS	MZ 33 018
	25	7,5	11	ML1	sw/gr bk/gr	ML1-025-V-1521-HS	MZ 33 046
	40	11	15	ML1	rt/ge rd/ye	ML1-040-V-1520-HS	MZ 35 018
	40	11	15	ML1	sw/gr bk/gr	ML1-040-V-1521-HS	MZ 35 046
	63	22	30	ML2	rt/ge rd/ye	ML2-063-V-1820-HS	MZ 37 018
	63	22	30	ML2	sw/gr bk/gr	ML2-063-V-1821-HS	MZ 37 046
	80	30	37	ML2	rt/ge rd/ye	ML2-080-V-1820-HS	MZ 39 018
	80	30	37	ML2	sw/gr bk/gr	ML2-080-V-1821-HS	MZ 39 046
	125	37	45	ML3	rt/ge rd/ye	ML3-125-V-1820-HS	MZ 41 018
	125	37	45	ML3	sw/gr bk/gr	ML3-125-V-1821-HS	MZ 41 046
	3-polig + 1S + 1Ö 3-pole + 1NC + 1NO 	25	7,5	7,5	ML0	rt/ge rd/ye	ML0-016-3V-1520-HS-HI
25		7,5	7,5	ML0	sw/gr bk/gr	ML0-016-3V-1521-HS-HI	MZ 57 410
32		9	9	ML0	rt/ge rd/ye	ML0-032-3V-1520-HS-HI	MZ 59 409
32		9	9	ML0	sw/gr bk/gr	ML0-032-3V-1521-HS-HI	MZ 59 410
25		7,5	11	ML1	rt/ge rd/ye	ML1-025-V-1520-HS-HI	MZ 33 028
25		7,5	11	ML1	sw/gr bk/gr	ML1-025-V-1521-HS-HI	MZ 33 056
40		11	15	ML1	rt/ge rd/ye	ML1-040-V-1520-HS-HI	MZ 35 028
40		11	15	ML1	sw/gr bk/gr	ML1-040-V-1521-HS-HI	MZ 35 056
63		22	30	ML2	rt/ge rd/ye	ML2-063-V-1820-HS-HI	MZ 37 028
63		22	30	ML2	sw/gr bk/gr	ML2-063-V-1821-HS-HI	MZ 37 056
80		30	37	ML2	rt/ge rd/ye	ML2-080-V-1820-HS-HI	MZ 39 028
80		30	37	ML2	sw/gr bk/gr	ML2-080-V-1821-HS-HI	MZ 39 056
125		37	45	ML3	rt/ge rd/ye	ML3-125-V-1820-HS-HI	MZ 41 028
125		37	45	ML3	sw/gr bk/gr	ML3-125-V-1821-HS-HI	MZ 41 056
4-polig 4-pole 		25	7,5	7,5	ML0	rt/ge rd/ye	ML0-016-4V-1520-HS
	25	7,5	7,5	ML0	sw/gr bk/gr	ML0-016-4V-1521-HS	MZ 57 667
	32	9	9	ML0	rt/ge rd/ye	ML0-032-4V-1520-HS	MZ 59 666
	32	9	9	ML0	sw/gr bk/gr	ML0-032-4V-1521-HS	MZ 59 667
	25	7,5	11	ML1	rt/ge rd/ye	ML1-025-V-1520-HS-NV	MZ 33 022
	25	7,5	11	ML1	sw/gr bk/gr	ML1-025-V-1521-HS-NV	MZ 33 050
	40	11	15	ML1	rt/ge rd/ye	ML1-040-V-1520-HS-NV	MZ 35 022
	40	11	15	ML1	sw/gr bk/gr	ML1-040-V-1521-HS-NV	MZ 35 050
	63	22	30	ML2	rt/ge rd/ye	ML2-063-V-1820-HS-NV	MZ 37 022
	63	22	30	ML2	sw/gr bk/gr	ML2-063-V-1821-HS-NV	MZ 37 050
	80	30	37	ML2	rt/ge rd/ye	ML2-080-V-1820-HS-NV	MZ 39 022
	80	30	37	ML2	sw/gr bk/gr	ML2-080-V-1821-HS-NV	MZ 39 050
	125	37	45	ML3	rt/ge rd/ye	ML3-125-V-1820-HS-NV	MZ 41 022
	125	37	45	ML3	sw/gr bk/gr	ML3-125-V-1821-HS-NV	MZ 41 050
	4-polig + 1S + 1Ö 4-pole + 1NC + 1NO 	25	7,5	7,5	ML0	rt/ge rd/ye	ML0-016-4V-1520-HS-HI
25		7,5	7,5	ML0	sw/gr bk/gr	ML0-016-4V-1521-HS-HI	MZ 57 710
32		9	9	ML0	rt/ge rd/ye	ML0-032-4V-1520-HS-HI	MZ 59 709
32		9	9	ML0	sw/gr bk/gr	ML0-032-4V-1521-HS-HI	MZ 59 710
25		7,5	11	ML1	rt/ge rd/ye	ML1-025-V-1520-HS-NV-HI	MZ 33 091
25		7,5	11	ML1	sw/gr bk/gr	ML1-025-V-1521-HS-NV-HI	MZ 33 098
40		11	15	ML1	rt/ge rd/ye	ML1-040-V-1520-HS-NV-HI	MZ 35 091
40		11	15	ML1	sw/gr bk/gr	ML1-040-V-1521-HS-NV-HI	MZ 35 098
63		22	30	ML2	rt/ge rd/ye	ML2-063-V-1820-HS-NV-HI	MZ 37 091
63		22	30	ML2	sw/gr bk/gr	ML2-063-V-1821-HS-NV-HI	MZ 37 098
80		30	37	ML2	rt/ge rd/ye	ML2-080-V-1820-HS-NV-HI	MZ 39 091
80		30	37	ML2	sw/gr bk/gr	ML2-080-V-1821-HS-NV-HI	MZ 39 098
125		37	45	ML3	rt/ge rd/ye	ML3-125-V-1820-HS-NV-HI	MZ 41 091
125		37	45	ML3	sw/gr bk/gr	ML3-125-V-1821-HS-NV-HI	MZ 41 098

