

SCHALTGERÄTE

Komplett-Typen Baureihe MN

Complete types Series MN

Hauptschalter/ Not-Aus-Schalter

Fronteinbau

Main switches Emergency-off switches

Front mounting

Zentralbefestigung 22,5 und 30,5 mm mit Vorhängeschlossperre für 3 Vorhängeschlosser

mit Bügeldurchmesser bis 9 mm

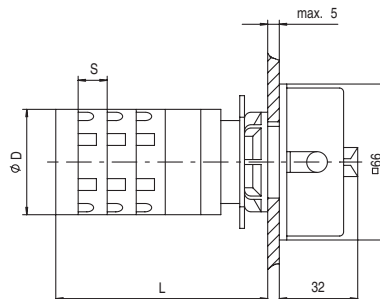
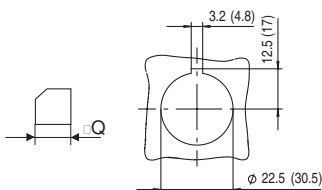
Griff/Frontschild
rot/gelb rt/ge (mit Not-Aus Funktion)
oder schwarz/silber sw/si

Central mounting 22.5 and 30.5 mm with lockout handle for 3 padlocks

with shackle diameter up to 9 mm

handle/front plate
red/yellow rd/ye (with Emergency-off function)
or black/silver bk/si

Abmessungen / Dimensions Bauform / Design: 1560 / 1561



Baureihe Series	Abmessungen (mm) Dimensions (mm)			L bei _Schaltkontakten L by _switch contacts			
	D	S	Q	1/2	3/4	5/6	7/8
104	44	16	6	57	73	89	105
105	44	12.5	6	48	60.5	73	85.5
151	49	12.5	6	68.5	81	93.5	106
251	63	12	6	72	84.5	97	109
451	63	17,5	6	77	94,5	112	129,5

Schaltprogramm Contact arrangement

Dauerstrom I_{th}
Rated
Uninterrupted
current I_{th}
A

Leistung
Rating
AC 3
kW

Leistung
Rating
AC 23A
kW

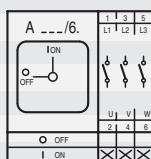
Baureihe
Series

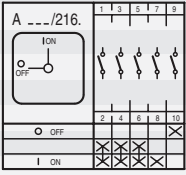
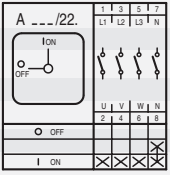
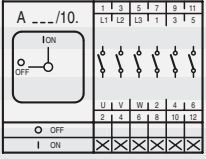
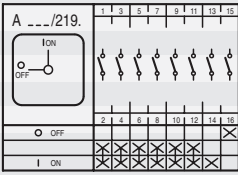
Griff-/
Frontschild
handle/
front plate

Typ
Type

Best.Nr.
Part #

3-polig 3-pole	20	5,5	7,5	104	rt/ge rd/ye	A 104/6.1560	MZ 10 109
	20	5,5	7,5	104	sw/si bk/si	A 104/6.1561	MZ 10 110
	25	5,5	7,5	105	rt/ge rd/ye	A 105/6.1560	MZ 12 109
	25	5,5	7,5	105	sw/si bk/si	A 105/6.1561	MZ 12 110
	32	7,5	11	151	rt/ge rd/ye	A 151/6.1560	MZ 17 109
	32	7,5	11	151	sw/si bk/si	A 151/6.1561	MZ 17 110
	40	11	15	251	rt/ge rd/ye	A 251/6.1560	MZ 19 109
	40	11	15	251	sw/si bk/si	A 251/6.1561	MZ 19 110
	63	18,5	22	451	rt/ge rd/ye	A 451/6.1560	MZ 21 109
	63	18,5	22	451	sw/si bk/si	A 451/6.1561	MZ 21 110



Schaltprogramm Contact arrangement	Dauerstrom I_{th} Rated Uninterrupted current I_{th} A	Leistung Rating AC 3 kW	Leistung Rating AC 23A kW	Baureihe Series	Griff-/ Frontschild handle/ front plate	Typ Type	Best.Nr. Part #	
3-polig + 1S + 1Ö 3-pole + 1NC + 1NO 	20	5,5	7,5	104	rt/ge rd/ye	A 104/216.1560	MZ 10 145	
	20	5,5	7,5	104	sw/si bk/si	A 104/216.1561	MZ 10 146	
	25	5,5	7,5	105	rt/ge rd/ye	A 105/216.1560	MZ 12 145	
	25	5,5	7,5	105	sw/si bk/si	A 105/216.1561	MZ 12 146	
	32	7,5	11	151	rt/ge rd/ye	A 151/216.1560	MZ 17 145	
	32	7,5	11	151	sw/si bk/si	A 151/216.1561	MZ 17 146	
	40	11	15	251	rt/ge rd/ye	A 251/216.1560	MZ 19 145	
	40	11	15	251	sw/si bk/si	A 251/216.1561	MZ 19 146	
	63	18,5	22	451	rt/ge rd/ye	A 451/216.1560	MZ 21 145	
	63	18,5	22	451	sw/si bk/si	A 451/216.1561	MZ 21 146	
4-polig 1 Kontakt voreilend 4-pole 1 contact priority 	20	5,5	7,5	104	rt/ge rd/ye	A 104/22.1560	MZ 10 111	
	20	5,5	7,5	104	sw/si bk/si	A 104/22.1561	MZ 10 112	
	25	5,5	7,5	105	rt/ge rd/ye	A 105/22.1560	MZ 12 111	
	25	5,5	7,5	105	sw/si bk/si	A 105/22.1561	MZ 12 112	
	32	7,5	11	151	rt/ge rd/ye	A 151/22.1560	MZ 17 111	
	32	7,5	11	151	sw/si bk/si	A 151/22.1561	MZ 17 112	
	40	11	15	251	rt/ge rd/ye	A 251/22.1560	MZ 19 111	
	40	11	15	251	sw/si bk/si	A 251/22.1561	MZ 19 112	
	63	18,5	22	451	rt/ge rd/ye	A 451/22.1560	MZ 21 111	
	63	18,5	22	451	sw/si bk/si	A 451/22.1561	MZ 21 112	
6-polig 6-pole 	20	5,5	7,5	104	rt/ge rd/ye	A 104/10.1560	MZ 10 115	
	20	5,5	7,5	104	sw/si bk/si	A 104/10.1561	MZ 10 116	
	25	5,5	7,5	105	rt/ge rd/ye	A 105/10.1560	MZ 12 115	
	25	5,5	7,5	105	sw/si bk/si	A 105/10.1561	MZ 12 116	
	32	7,5	11	151	rt/ge rd/ye	A 151/10.1560	MZ 17 115	
	32	7,5	11	151	sw/si bk/si	A 151/10.1561	MZ 17 116	
	40	11	15	251	rt/ge rd/ye	A 251/10.1560	MZ 19 115	
	40	11	15	251	sw/si bk/si	A 251/10.1561	MZ 19 116	
	6-pole + 1S + 1O	20	5,5	7,5	104	rt/ge rd/ye	A 104/219.1560	MZ 10 175
	6-pole + 1NC + 1NO	20	5,5	7,5	104	sw/si bk/si	A 104/219.1561	MZ 10 176
A ___/219. 	25	5,5	7,5	105	rt/ge rd/ye	A 105/219.1560	MZ 12 175	
	25	5,5	7,5	105	sw/si bk/si	A 105/219.1561	MZ 12 176	
	32	7,5	11	151	rt/ge rd/ye	A 151/219.1560	MZ 17 175	
	32	7,5	11	151	sw/si bk/si	A 151/219.1561	MZ 17 176	
	40	11	15	251	rt/ge rd/ye	A 251/219.1560	MZ 19 175	
	40	11	15	251	sw/si bk/si	A 251/219.1561	MZ 19 176	