

# SCHALTGERÄTE

## Komplett-Typen Baureihe ML

### Complete types Series ML

#### Hauptschalter/ Not-Aus-Schalter

Fronteinbau E

#### Main switches Emergency-off switches

Front mounting E



\*ML0 IP 55  
IP 65

#### 4-Lochbefestigung mit Vorhängeschlossperre für 1 oder 2 Vorhängeschlösser

mit Bügeldurchmesser bis 5 mm,  
ML -Schalter mit Klemmenabdeckung

Griff/Frontschild  
rot/gelb rt/ge (mit Not-Aus Funktion)  
oder schwarz/silber sw/si

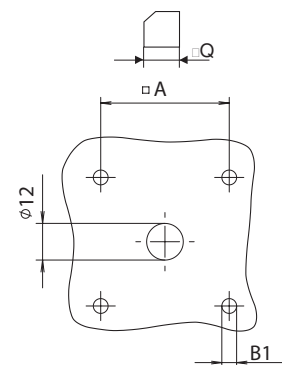
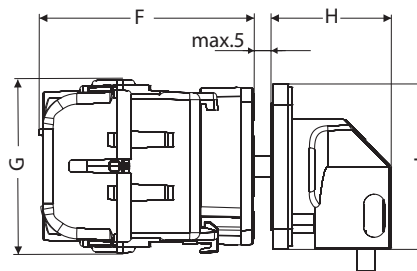
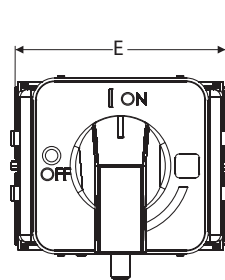
#### 4-hole mounting with lockout handle for 1 or 2 padlocks

with shackle diameter up to 5 mm,  
ML -switches with terminal cover

handle/front plate  
red/yellow rd/ye (with Emergency-off function)  
or black/silver bk/si

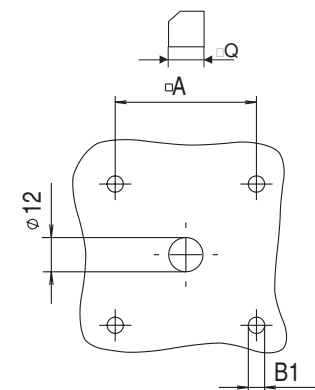
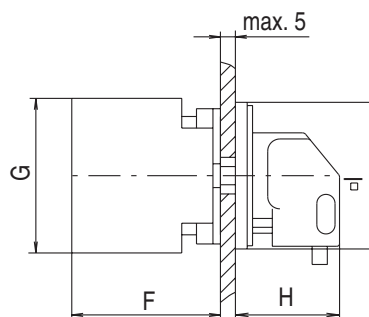
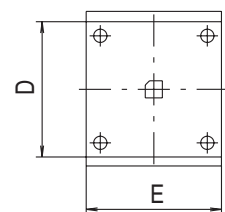
#### Abmessungen / Dimensions

Bauform / Design: 0200-EV / 0200-EVS  
Baureihe / Series: ML0

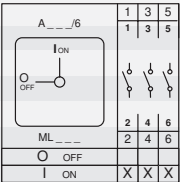
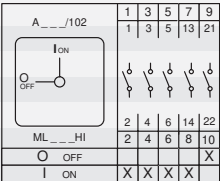
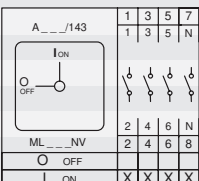
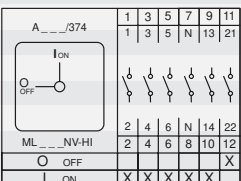


#### Abmessungen / Dimensions

Bauform / Design: 0200-EV / 0200-EVS  
Baureihe / Series: ML1



Baureihe Series	Abmessungen (mm) Dimensions (mm)								
	A	B1	D	E	F	G	H	I	Q
ML0	36	4,5		60	60	49	35	48	6
ML1	36	4,5	55	45	50	55	35	86	6

Schaltprogramm Contact arrangement	Dauerstrom I <sub>th</sub> Rated Uninterrupted current I <sub>th</sub> A	Leistung Rating AC 3 kW	Leistung Rating AC 23A kW	Baureihe Series	Griff-/ Frontschild handle/ front plate	Typ Type	Best.Nr. Part #	
3-polig 3-pole  	25	7,5	7,5	ML0	rt/ge rd/ye	ML0-016-3E-0200-EV-HS	<b>MZ 57 312</b>	
	25	7,5	7,5	ML0	sw/si bk/si	ML0-016-3E-0200-EVS-HS	<b>MZ 57 313</b>	
	32	9	9	ML0	rt/ge rd/ye	ML0-032-3E-0200-EV-HS	<b>MZ 59 312</b>	
	32	9	9	ML0	sw/si bk/si	ML0-032-3E-0200-EVS-HS	<b>MZ 59 313</b>	
	25	7,5	11	ML1	rt/ge rd/ye	ML1-025-E-0200-EV-HS	<b>MZ 33 001</b>	
	25	7,5	11	ML1	sw/si bk/si	ML1-025-E-0200-EVS-HS	<b>MZ 33 029</b>	
	40	11	15	ML1	rt/ge rd/ye	ML1-040-E-0200-EV-HS	<b>MZ 35 001</b>	
	40	11	15	ML1	sw/si bk/si	ML1-040-E-0200-EVS-HS	<b>MZ 35 029</b>	
3-polig + 1S + 1Ö 3-pole + 1NC + 1NO  	25	7,5	7,5	ML0	rt/ge rd/ye	ML0-016-3E-0200-EV-HS-HI	<b>MZ 57 374</b>	
	25	7,5	7,5	ML0	sw/si bk/si	ML0-016-3E-0200-EVS-HS-HI	<b>MZ 57 375</b>	
	32	9	9	ML0	rt/ge rd/ye	ML0-032-3E-0200-EV-HS-HI	<b>MZ 59 374</b>	
	32	9	9	ML0	sw/si bk/si	ML0-032-3E-0200-EVS-HS-HI	<b>MZ 59 375</b>	
	25	7,5	11	ML1	rt/ge rd/ye	ML1-025-E-0200-EV-HS-HI	<b>MZ 33 011</b>	
	25	7,5	11	ML1	sw/si bk/si	ML1-025-E-0200-EVS-HS-HI	<b>MZ 33 039</b>	
	40	11	15	ML1	rt/ge rd/ye	ML1-040-E-0200-EV-HS-HI	<b>MZ 35 011</b>	
	40	11	15	ML1	sw/si bk/si	ML1-040-E-0200-EVS-HS-HI	<b>MZ 35 039</b>	
4-polig 4-pole  	25	7,5	7,5	ML0	rt/ge rd/ye	ML0-016-4E-0200-EV-HS	<b>MZ 57 612</b>	
	25	7,5	7,5	ML0	sw/si bk/si	ML0-016-4E-0200-EVS-HS	<b>MZ 57 613</b>	
	32	9	9	ML0	rt/ge rd/ye	ML0-032-4E-0200-EV-HS	<b>MZ 59 612</b>	
	32	9	9	ML0	sw/si bk/si	ML0-032-4E-0200-EVS-HS	<b>MZ 59 613</b>	
	25	7,5	11	ML1	rt/ge rd/ye	ML1-025-E-0200-EV-HS-NV	<b>MZ 33 005</b>	
	25	7,5	11	ML1	sw/si bk/si	ML1-025-E-0200-EVS-HS-NV	<b>MZ 33 033</b>	
	40	11	15	ML1	rt/ge rd/ye	ML1-040-E-0200-EV-HS-NV	<b>MZ 35 005</b>	
	40	11	15	ML1	sw/si bk/si	ML1-040-E-0200-EVS-HS-NV	<b>MZ 35 033</b>	
4-polig + 1S + 1Ö 4-pole + 1NC + 1NO  	25	7,5	7,5	ML0	rt/ge rd/ye	ML0-016-4E-0200-EV-HS-HI	<b>MZ 57 674</b>	
	25	7,5	7,5	ML0	sw/si bk/si	ML0-016-4E-0200-EVS-HS-HI	<b>MZ 57 675</b>	
	32	9	9	ML0	rt/ge rd/ye	ML0-032-4E-0200-EV-HS-HI	<b>MZ 59 674</b>	
	32	9	9	ML0	sw/si bk/si	ML0-032-4E-0200-EVS-HS-HI	<b>MZ 59 675</b>	
	25	7,5	11	ML1	rt/ge rd/ye	ML1-025-E-0200-EV-HS-NV-HI	<b>MZ 33 076</b>	
	25	7,5	11	ML1	sw/si bk/si	ML1-025-E-0200-EVS-HS-NV-HI	<b>MZ 33 082</b>	
	40	11	15	ML1	rt/ge rd/ye	ML1-040-E-0200-EV-HS-NV-HI	<b>MZ 35 076</b>	
	40	11	15	ML1	sw/si bk/si	ML1-040-E-0200-EVS-HS-NV-HI	<b>MZ 35 082</b>	

