

SCHALTGERÄTE

Komplett-Typen Baureihe ML

Complete types Series ML

Hauptschalter/ Not-Aus-Schalter

Fronteinbau E

Main switches Emergency-off switches

Front mounting E



IP 65

Zentralbefestigung
22,5 und 30,5 mm mit
Vorhängeschlossperre
für 1 oder 2
Vorhängeschlosser

mit Bügeldurchmesser bis 5 mm,
ML -Schalter mit Klemmenabdeckung

Griff/Frontschild
rot/gelb rt/ge (mit Not-Aus Funktion)
oder schwarz/silber sw/si

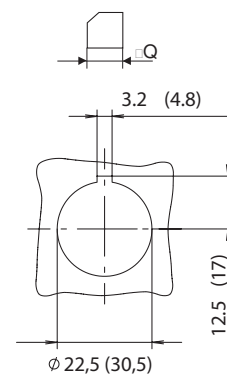
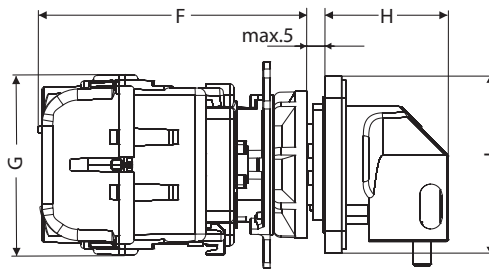
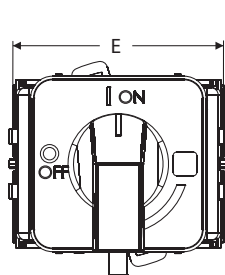
Central mounting
22.5 and 30.5 mm
with lockout handle
for 1 or 2 padlocks

with shackle diameter up to 5 mm,
ML -switches with terminal cover

handle/front plate
red/yellow rd/ye (with Emergency-off function)
or black/silver bk/si

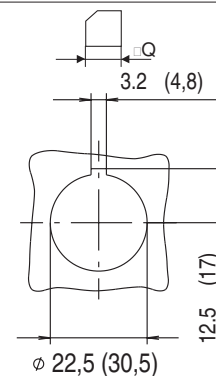
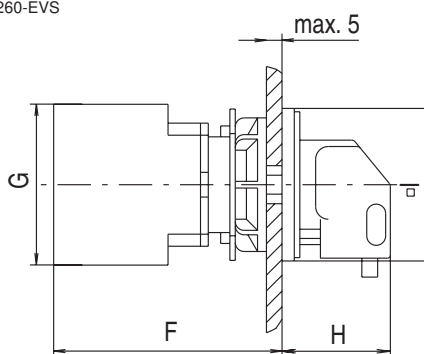
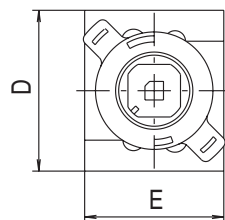
Abmessungen / Dimensions

Bauform / Design: 0260-EV / 0260-EVS
Baureihe / Series: ML0

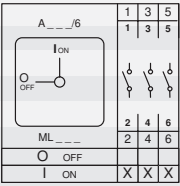
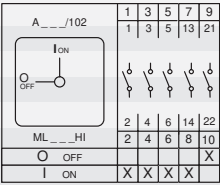
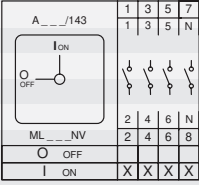
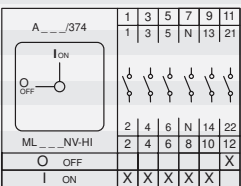


Abmessungen / Dimensions

Bauform / Design: 0260-EV / 0260-EVS
Baureihe / Series: ML1



Baureihe Series	Abmessungen (mm) Dimensions (mm)						
	D	E	F	G	H	I	Q
ML0		60	73	49	35	48	6
ML1	55	45	75	55	35	48	6

Schaltprogramm Contact arrangement	Dauerstrom I_{th} Rated Uninterrupted current I_{th} A	Leistung Rating AC 3 kW	Leistung Rating AC 23A kW	Baureihe Series	Griff-/ Frontschild handle/ front plate	Typ Type	Best.Nr. Part #	
3-polig 3-pole 	25	7,5	7,5	ML0	rt/ge rd/ye	ML0-016-3E-0260-EV-HS	MZ 57 316	
	25	7,5	7,5	ML0	sw/si bk/si	ML0-016-3E-0260-EVS-HS	MZ 57 317	
	32	9	9	ML0	rt/ge rd/ye	ML0-032-3E-0260-EV-HS	MZ 59 316	
	32	9	9	ML0	sw/si bk/si	ML0-032-3E-0260-EVS-HS	MZ 59 317	
	25	7,5	11	ML1	rt/ge rd/ye	ML1-025-E-0260-EV-HS	MZ 33 003	
	25	7,5	11	ML1	sw/si bk/si	ML1-025-E-0260-EVS-HS	MZ 33 031	
	40	11	15	ML1	rt/ge rd/ye	ML1-040-E-0260-EV-HS	MZ 35 003	
	40	11	15	ML1	sw/si bk/si	ML1-040-E-0260-EVS-HS	MZ 35 031	
3-polig + 1S + 1Ö 3-pole + 1NC + 1NO 	25	7,5	7,5	ML0	rt/ge rd/ye	ML0-016-3E-0260-EV-HS-HI	MZ 57 378	
	25	7,5	7,5	ML0	sw/si bk/si	ML0-016-3E-0260-EVS-HS-HI	MZ 57 379	
	32	9	9	ML0	rt/ge rd/ye	ML0-032-3E-0260-EV-HS-HI	MZ 59 378	
	32	9	9	ML0	sw/si bk/si	ML0-032-3E-0260-EVS-HS-HI	MZ 59 379	
	25	7,5	11	ML1	rt/ge rd/ye	ML1-025-E-0260-EV-HS-HI	MZ 33 013	
	25	7,5	11	ML1	sw/si bk/si	ML1-025-E-0260-EVS-HS-HI	MZ 33 041	
	40	11	15	ML1	rt/ge rd/ye	ML1-040-E-0260-EV-HS-HI	MZ 35 013	
	40	11	15	ML1	sw/si bk/si	ML1-040-E-0260-EVS-HS-HI	MZ 35 041	
4-polig 4-pole 	25	7,5	7,5	ML0	rt/ge rd/ye	ML0-016-4E-0260-EV-HS	MZ 57 616	
	25	7,5	7,5	ML0	sw/si bk/si	ML0-016-4E-0260-EVS-HS	MZ 57 617	
	32	9	9	ML0	rt/ge rd/ye	ML0-032-4E-0260-EV-HS	MZ 59 616	
	32	9	9	ML0	sw/si bk/si	ML0-032-4E-0260-EVS-HS	MZ 59 617	
	25	7,5	11	ML1	rt/ge rd/ye	ML1-025-E-0260-EV-HS-NV	MZ 33 007	
	25	7,5	11	ML1	sw/si bk/si	ML1-025-E-0260-EVS-HS-NV	MZ 33 035	
	40	11	15	ML1	rt/ge rd/ye	ML1-040-E-0260-EV-HS-NV	MZ 35 007	
	40	11	15	ML1	sw/si bk/si	ML1-040-E-0260-EVS-HS-NV	MZ 35 035	
4-polig + 1S + 1Ö 4-pole + 1NC + 1NO 	25	7,5	7,5	ML0	rt/ge rd/ye	ML0-016-4E-0260-EV-HS-HI	MZ 57 678	
	25	7,5	7,5	ML0	sw/si bk/si	ML0-016-4E-0260-EVS-HS-HI	MZ 57 679	
	32	9	9	ML0	rt/ge rd/ye	ML0-032-4E-0260-EV-HS-HI	MZ 59 678	
	32	9	9	ML0	sw/si bk/si	ML0-032-4E-0260-EVS-HS-HI	MZ 59 679	
	25	7,5	11	ML1	rt/ge rd/ye	ML1-025-E-0260-EV-HS-NV-HI	MZ 33 078	
	25	7,5	11	ML1	sw/si bk/si	ML1-025-E-0260-EVS-HS-NV-HI	MZ 33 084	
	40	11	15	ML1	rt/ge rd/ye	ML1-040-E-0260-EV-HS-NV-HI	MZ 35 078	
	40	11	15	ML1	sw/si bk/si	ML1-040-E-0260-EVS-HS-NV-HI	MZ 35 084	

