



# SCHALTGERÄTE

## Komplett-Typen Baureihe MN

### Complete types Series MN

#### Stufenschalter mit 0-Stellung, 7 bis 11 Stufen

Griff/Frontschild schwarz/silber sw/si  
Schaltwinkel 45°, 30°

Mehrpolige Schalter auf Anfrage \*2

#### Step switches with 0-position, 7 to 11 steps

handle/front plate black/silver bk/si  
switching angle 45°, 30°

Multipole switches on request \*2

Schaltbilder Contact diagram	Schaltprogramm Contact arrangement	Dauerstrom I <sub>n</sub> Rated Uninterrupted current I <sub>n</sub>	Leistung Rating AC 3	Leistung Rating AC 23A	Schaltkammer Contact chamber	Baureihe Series
		A	kW	kW		
	<b>7 Stufen / 7 steps</b> 1-polig / 1-pole	10	0,5*	0,5*	4	107
		20	2,2*	2,2*	5	104
		25	2,2*	2,2*	5	105
		32	3*	3*	4	151
		40	4*	4*	4	251
		63	5,5*	5,5*	4	451
		80	11*	11*	4	656
125	11*	11*	4	756		
	<b>8 Stufen / 8 steps</b> 1-polig / 1-pole	10	0,5*	0,5*	4	107
		20	2,2*	2,2*	5	104
		25	2,2*	2,2*	5	105
		32	3*	3*	4	151
		40	4*	4*	4	251
		63	5,5*	5,5*	4	451
		80	11*	11*	4	656
125	11*	11*	4	756		
	<b>9 Stufen / 9 steps</b> 1-polig / 1-pole	10	0,5*	0,5*	5	107
		20	2,2*	2,2*	6	104
		25	2,2*	2,2*	6	105
		32	3*	3*	5	151
		40	4*	4*	5	251
		63	5,5*	5,5*	5	451
		80	11*	11*	5	656
125	11*	11*	5	756		
	<b>10 Stufen / 10 steps</b> 1-polig / 1-pole	10	0,5*	0,5*	5	107
		20	2,2*	2,2*	6	104
		25	2,2*	2,2*	6	105
		32	3*	3*	5	151
		40	4*	4*	5	251
		63	5,5*	5,5*	5	451
		80	11*	11*	5	656
125	11*	11*	5	756		
	<b>11 Stufen / 11 steps</b> 1-polig / 1-pole	10	0,5*	0,5*	6	107
		20	2,2*	2,2*	7	104
		25	2,2*	2,2*	7	105
		32	3*	3*	6	151
		40	4*	4*	6	251
		63	5,5*	5,5*	6	451
		80	11*	11*	6	656
125	11*	11*	6	756		

Weitere Bauformen und Zusatzausrüstungen auf Seiten 4.21-4.51

Other applications and additional equipment please see pages 4.21-4.51

Maßzeichnungen/Abmessungen auf Seiten 4.21-4.32  
Dimensional drawings please see pages 4.21-4.32

Weitere Frontschilder im Tausch (ohne Mehrpreis) auf Seiten 4.54-4.55  
Frontplates available without surcharge please see pages 4.54-4.55

\* AC 3/1x230V

\*2 Eine Gesamtübersicht der Stufenschalter finden Sie auf unserem CD-Katalog und im Internet  
A complete overview of all step-switches is available on our CD-Rom catalogue and on the internet

IP 54



Fronteinbau mit 4-Lochbefestigung

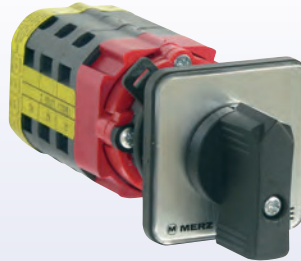
4-hole front mounting

Typ/Type

Best.Nr./Part #

V 107/64.0150	<b>MZ 15 468</b>
V 104/64.0200	<b>MZ 10 468</b>
V 105/64.0200	<b>MZ 12 468</b>
V 151/64.0200	<b>MZ 17 468</b>
V 251/64.0400	<b>MZ 19 468</b>
V 451/64.0400	<b>MZ 21 468</b>
V 656/64.0600	<b>MZ 25 468</b>
V 756/64.0600	<b>MZ 27 468</b>

IP 65



Fronteinbau mit Zentralbefestigung 22,5mm und 30,5mm

Single-hole mounting 22,5mm und 30,5mm

Typ/Type

Best.Nr./Part #

V 107/64.0160	<b>MZ 15 472</b>
V 104/64.0260	<b>MZ 10 472</b>
V 105/64.0260	<b>MZ 12 472</b>
V 151/64.0260	<b>MZ 17 472</b>
V 251/64.0460	<b>MZ 19 472</b>

IP 54



Bodeneinbau mit Schraubbefestigung

Screw-on Base mounting

Typ/Type

Best.Nr./Part #

V 104/64.0202	<b>MZ 10 470</b>
V 105/64.0202	<b>MZ 12 470</b>
V 151/64.0202	<b>MZ 17 470</b>
V 251/64.0402	<b>MZ 19 470</b>
V 451/64.0402	<b>MZ 21 470</b>
V 656/64.0602	<b>MZ 25 470</b>
V 756/64.0602	<b>MZ 27 470</b>

V 107/122.0150	<b>MZ 15 474</b>	V 107/122.0160	<b>MZ 15 476</b>	V 104/122.0202	<b>MZ 10 475</b>
V 104/122.0200	<b>MZ 10 474</b>	V 104/122.0260	<b>MZ 10 476</b>	V 105/122.0202	<b>MZ 12 475</b>
V 105/122.0200	<b>MZ 12 474</b>	V 105/122.0260	<b>MZ 12 476</b>	V 151/122.0202	<b>MZ 17 475</b>
V 151/122.0200	<b>MZ 17 474</b>	V 151/122.0260	<b>MZ 17 476</b>	V 251/122.0402	<b>MZ 19 475</b>
V 251/122.0400	<b>MZ 19 474</b>	V 251/122.0460	<b>MZ 19 476</b>	V 451/122.0402	<b>MZ 21 475</b>
V 451/122.0400	<b>MZ 21 474</b>			V 656/122.0602	<b>MZ 25 475</b>
V 656/122.0600	<b>MZ 25 474</b>			V 756/122.0602	<b>MZ 27 475</b>
V 756/122.0600	<b>MZ 27 474</b>				

V 107/96.0150	<b>MZ 15 477</b>	V 107/96.0160	<b>MZ 15 479</b>	V 104/96.0202	<b>MZ 10 478</b>
V 104/96.0200	<b>MZ 10 477</b>	V 104/96.0260	<b>MZ 10 479</b>	V 105/96.0202	<b>MZ 12 478</b>
V 105/96.0200	<b>MZ 12 477</b>	V 105/96.0260	<b>MZ 12 479</b>	V 151/96.0202	<b>MZ 17 478</b>
V 151/96.0200	<b>MZ 17 477</b>	V 151/96.0260	<b>MZ 17 479</b>	V 251/96.0402	<b>MZ 19 478</b>
V 251/96.0400	<b>MZ 19 477</b>	V 251/96.0460	<b>MZ 19 479</b>	V 451/96.0402	<b>MZ 21 478</b>
V 451/96.0400	<b>MZ 21 477</b>			V 656/96.0602	<b>MZ 25 478</b>
V 656/96.0600	<b>MZ 25 477</b>			V 756/96.0602	<b>MZ 27 478</b>
V 756/96.0600	<b>MZ 27 477</b>				

V 107/108.0150	<b>MZ 15 480</b>	V 107/108.0160	<b>MZ 15 482</b>	V 104/108.0202	<b>MZ 10 481</b>
V 104/108.0200	<b>MZ 10 480</b>	V 104/108.0260	<b>MZ 10 482</b>	V 105/108.0202	<b>MZ 12 481</b>
V 105/108.0200	<b>MZ 12 480</b>	V 105/108.0260	<b>MZ 12 482</b>	V 151/108.0202	<b>MZ 17 481</b>
V 151/108.0200	<b>MZ 17 480</b>	V 151/108.0260	<b>MZ 17 482</b>	V 251/108.0402	<b>MZ 19 481</b>
V 251/108.0400	<b>MZ 19 480</b>	V 251/108.0460	<b>MZ 19 482</b>	V 451/108.0402	<b>MZ 21 481</b>
V 451/108.0400	<b>MZ 21 480</b>			V 656/108.0602	<b>MZ 25 481</b>
V 656/108.0600	<b>MZ 25 480</b>			V 756/108.0602	<b>MZ 27 481</b>
V 756/108.0600	<b>MZ 27 480</b>				

V 107/113.0150	<b>MZ 15 483</b>	V 107/113.0160	<b>MZ 15 485</b>	V 104/113.0202	<b>MZ 10 484</b>
V 104/113.0200	<b>MZ 10 483</b>	V 104/113.0260	<b>MZ 10 485</b>	V 105/113.0202	<b>MZ 12 484</b>
V 105/113.0200	<b>MZ 12 483</b>	V 105/113.0260	<b>MZ 12 485</b>	V 151/113.0202	<b>MZ 17 484</b>
V 151/113.0200	<b>MZ 17 483</b>	V 151/113.0260	<b>MZ 17 485</b>	V 251/113.0402	<b>MZ 19 484</b>
V 251/113.0400	<b>MZ 19 483</b>	V 251/113.0460	<b>MZ 19 485</b>	V 451/113.0402	<b>MZ 21 484</b>
V 451/113.0400	<b>MZ 21 483</b>			V 656/113.0602	<b>MZ 25 484</b>
V 656/113.0600	<b>MZ 25 483</b>			V 756/113.0602	<b>MZ 27 484</b>
V 756/113.0600	<b>MZ 27 483</b>				